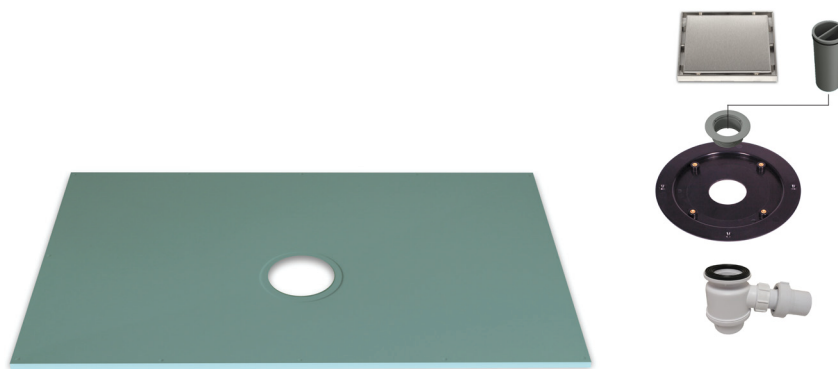


# QUATTRO DEC

## INSTALLATION GUIDE



## 1. INTRODUCTION

The Quattro Dec Floor Former is a preformed shower base developed specifically to allow the installation of a wetroom onto a timber floor.

It simply replaces the area where the floorboards have been removed.

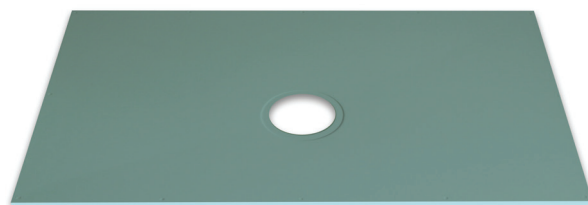
### Key Features

- Designed for timber floors
- Four way fall - suited to mosaic tiles
- 22mm depth
- Trimmable by up to 50mm around the perimeter
- Flow rate up to 24 L/min
- Height adjustable grill
- Choice of grill options

## 2. COMPONENTS

The Quattro Dec kit consists of the following:

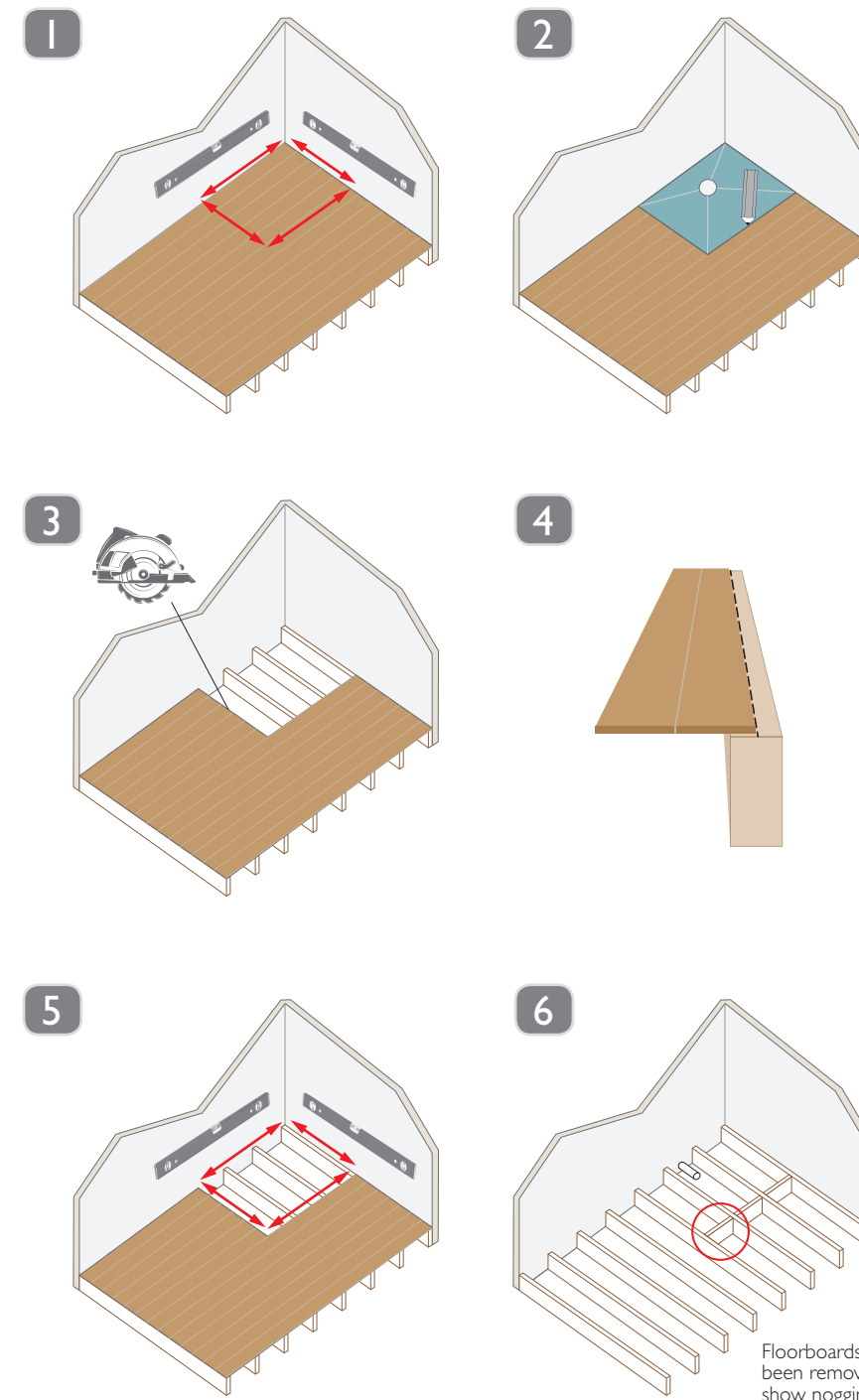
- 22mm preformed Floor Former with fixing washers
- Single trap gully with adjustable outlet
- Height adjustable stainless steel grill



## 3. STEP BY STEP INSTALLATION GUIDE

The following steps provide a detailed guide to the Quattro Dec installation.

### STEP BY STEP GUIDE FOR INSTALLING A QUATTRO DEC FORMER ON A SUSPENDED TIMBER FLOOR



**1.** Check if floor is level. If not, this will need to be corrected before continuing with the installation.

**2.** Place Floor Former in position and mark around the edge.

**3.** Carefully cut along the line that has been drawn using a skill saw, set to the correct depth. Then remove the floorboards in the area where the Floor Former will sit.  
**NOTE:** Beware of hidden pipes and cables within the joist area.

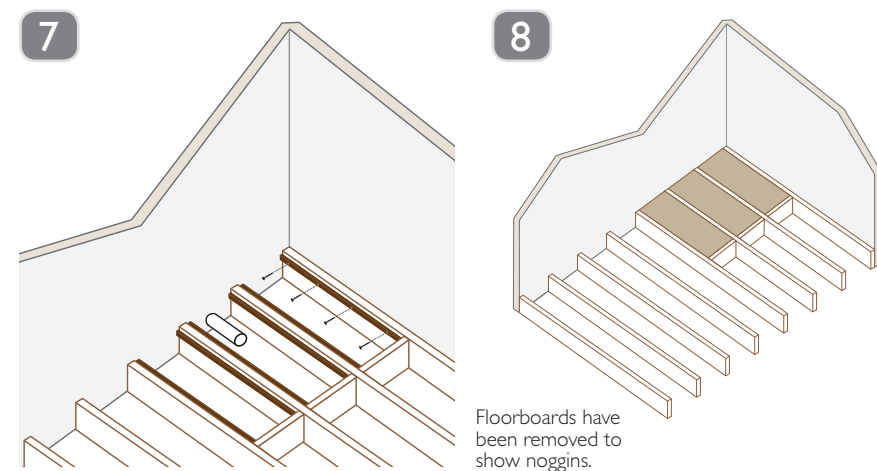
**4.** Once the perimeter of the Floor Former has been cut round, the floorboard to the centre line of the next joist must be removed.

**5.** Check joists are level. If not, this can be corrected when installing battens.

**6.** Install a 1 1/2 inch solvent weld waste pipe within the shower area.

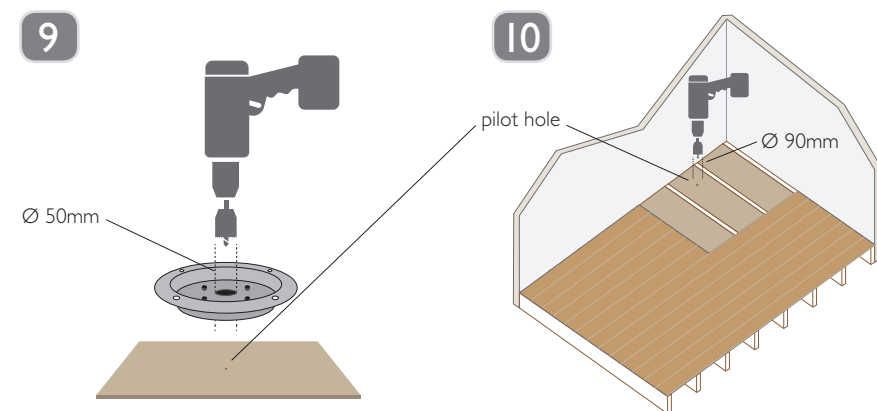
Where necessary, install noggins to support the edges of the Floor Former.

Floorboards have been removed to show noggins.



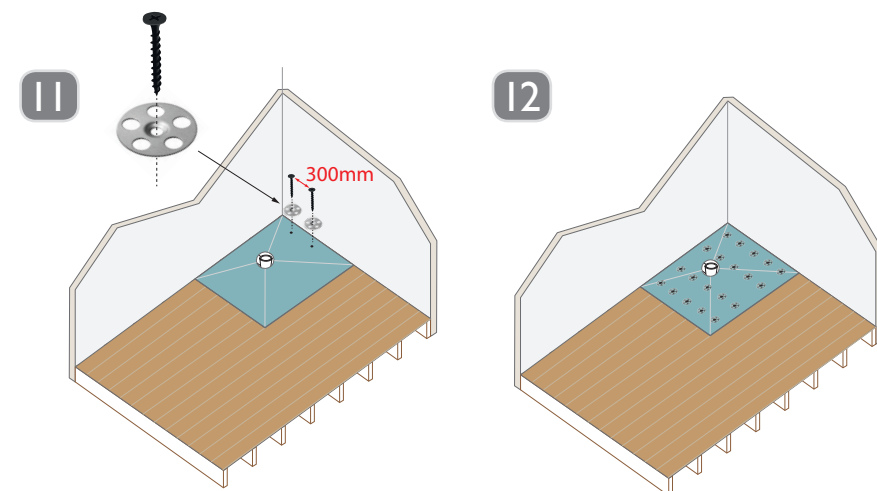
**7.** Working from the highest point, screw timber battens to the joists at a height which will ensure that the top of 18mm thick plywood will sit level with the highest point of the floor when in place. **Note:** Do not assume floor joists are level as they may be bowed / distorted.

**8.** Cut the 18mm plywood and fix onto the timber battens to provide a flat base for the Floor Former. **Note:** When in place the Floor Former should be perfectly flat and finish flush with the highest point of the floor.



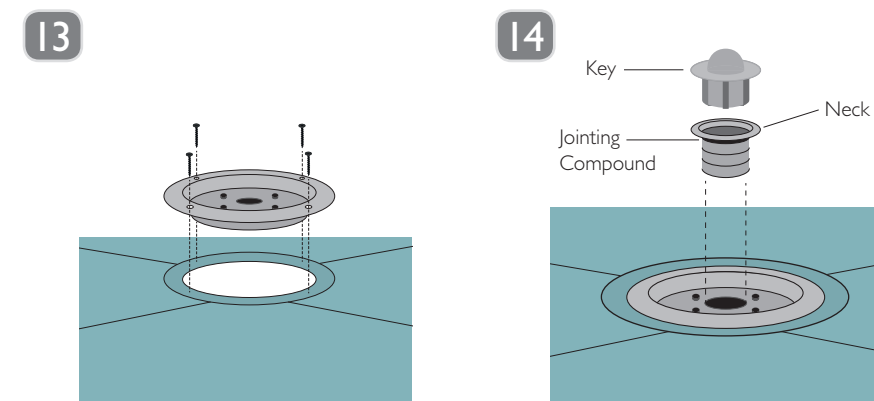
**9.** Again place the Floor Former into position. Loosely fit the Base Component and drill out the centre of it using a 50mm hole saw, ensuring the pilot drill marks the 18mm ply below.

**10.** Using the pilot hole as a reference point, cut a 90mm diameter hole in the 18mm ply using a hole saw. Remove the ply and loosely fit the trap onto the waste pipe. Loosely re-position the 18mm ply, Floor Former and Base Component to re-check alignment. Adjust as required then solvent weld the trap into position. Once the trap is in position, fix the 18mm ply to the support battens.



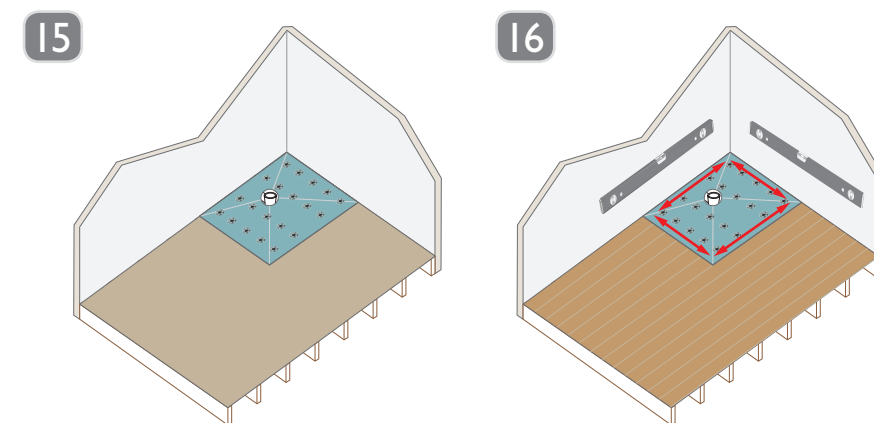
**11.** Fix Floor Former to ply support using fixing washers supplied and appropriate length screws with a spacing of 300mm centres. **DO NOT** over tighten screws. The Floor Former is designed to finish flush with 22mm Chipboard/Ply.

**12.** Ensure that all of the washers provided are used to secure the Floor Former to prevent flexing.



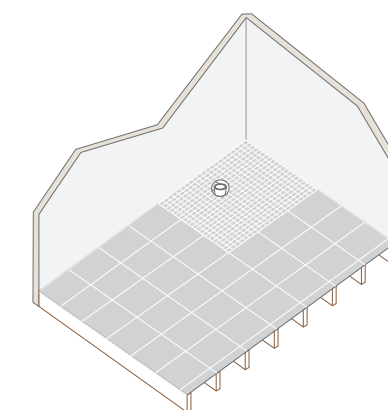
**13.** Fit rubber seal to the trap with the grooves facing downward then screw the Base Component to the Floor Former. Fit the grill loosely in position to check that it is running parallel with the proposed tiling plan. If not, an amount of rotation is built into the grill to enable alignment.

**14.** Apply a suitable jointing compound. Screw neck into trap using key provided.



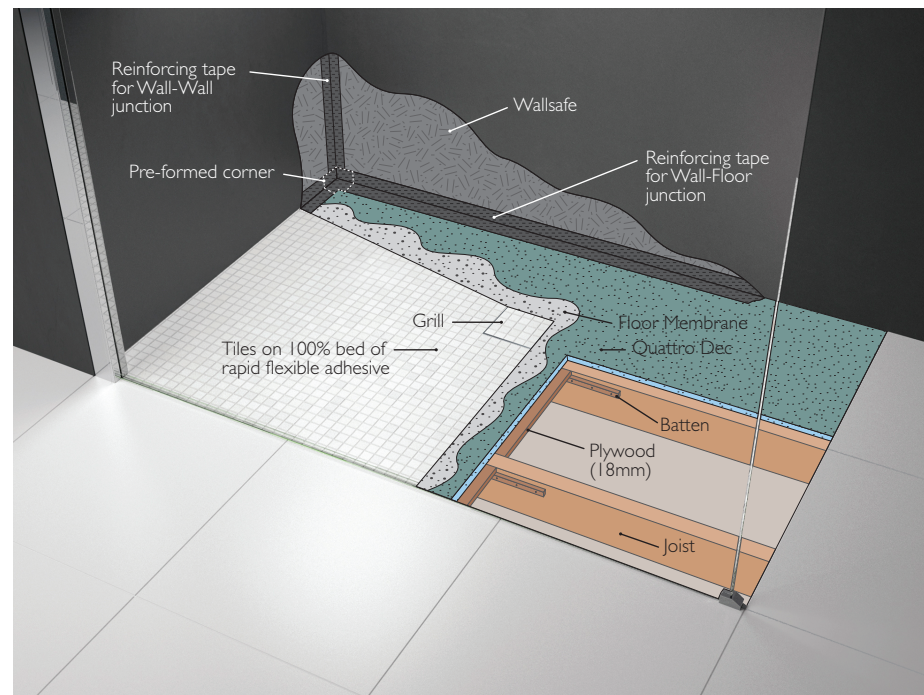
**15.** If the flooring is only 18mm thick, a 4mm ply will need to be laid over the remainder of the floor to bring it up to the level of the installed Floor Former.

**16.** Finally, check that the Floor Former is level on all 4 sides. **IMPORTANT:** The rest of the floor must also be level. The area is now ready to install the floor membrane. Remember to clean the Base Component with the alcohol wipe supplied prior to installing the floor membrane.



**NOTE:** For full details of the membrane see separate installation instructions. After the floor membrane has been installed, fit the Square Grill and adjust as necessary, following separate instructions supplied. The floor is now ready for tiling.

#### 4. TYPICAL FLOOR BUILD-UP



#### 5. IMPORTANT NOTES

- Always fully support the Floor Former and black Base Component with a minimum 18mm plywood base.
- Ensure the correct length bolts are used to secure the stainless steel frame to the Base Component. Only use the longer bolts when using the larger spacing washers.
- Do not over tighten the fixing bolts as this may damage the Base Component.
- Always use the alcohol cleaning wipe to de-grease and clean the Base Component prior to the installation of the membrane.
- Ensure the dip-tube is replaced after the trap is installed.
- Maximum flow rate of a single trap in a wetroom is 24L/min.
- The waterproof membrane should cover the entire Floor Former and a minimum of one metre beyond in either direction.
- Always tile using a water resistant C1 or C2 cementitious tile adhesive, meeting the requirements of BS EN 12004. Tile grout should be water resistant, meeting the requirements of BS EN 13888.
- Tiles in wetrooms should be fixed using the solid bed method, i.e. ensuring that there are no voids beneath the tiles.

TECHNICAL HELPLINE  
CALL: 01256 766757



UK Head Office  
Novellini UK Ltd  
Unit 11  
Caxton Court  
Porters Wood  
St Albans  
Hertfordshire  
AL3 6XT

Telephone: 01727 229922  
Fax: 01727 838232

e: [info-uk@novellini.com](mailto:info-uk@novellini.com)  
[www.novellini.com](http://www.novellini.com)